

CLIMATE ADAPTATION IN TIREE

Community-led action to protect our coast, dunes, and machair



Why this project matters



Tiree is one of Scotland's most low-lying islands, and we're already seeing the effects of climate change – stronger storms, coastal erosion, flooding of low-lying land, and pressure on dunes and machair.

These changes affect:

- Croft land and grazing
- Roads, access, and infrastructure
- Homes and businesses
- Wildlife and fragile coastal habitats

People living and working in Tiree know these changes first-hand. This project starts from that lived experience.



What this project is not

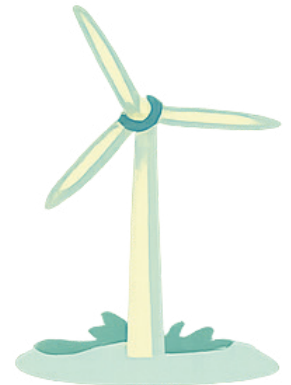


It's important to be clear about boundaries.

This project is **not**:

- Large-scale hard engineering (e.g. sea walls)
- A finished or fixed plan
- Taking land out of use without consent
- Being done "to" the community rather than "with" it

Instead, it's about **testing what works**, learning together, and building local capacity for longer-term stewardship.



What this project is

This is a **community-led climate adaptation project** focused on **nature-based solutions** – practical, low-impact ways of working with the landscape to reduce erosion and flooding risk.

It builds directly on:

- Community workshops and mapping carried out in 2023–24
- A pilot project delivered jointly by Tiree Community Development Trust and The Open University
- Clear recommendations from island residents to move from discussion into **practical action**

The project is funded through a national research and community programme focused on **ecological citizenship and nature-based solutions**, and is being delivered locally by Tiree Community Development Trust, working in partnership with The Open University



CLIMATE ADAPTATION IN TIREE

COMMUNITY-LED ACTION TO PROTECT OUR COAST, DUNES, AND MACHAIR



What we're proposing to do

Over the course of the project, we'll be **testing small-scale, practical interventions** that have been suggested by the community and used successfully in other coastal and island locations.

These include:

- Marram grass planting to stabilise dunes
- Using recycled or natural materials (such as creels or Christmas trees) to help trap sand
- Trialling low-impact "soft engineering" approaches rather than hard sea defences
- Improving drainage in some low-lying areas, where appropriate

All proposed works are:

- Small-scale and trial-based
- Installed gradually, not all at once
- Chosen with local knowledge and land managers
- Designed so they can be monitored, adapted, or stopped if they don't work

Nothing is being imposed without discussion.

What happens next

- Community drop-in sessions to share information and hear feedback
- Early trial installations at agreed sites
- Ongoing monitoring and learning
- Regular updates shared openly with the community

This is a **learning-by-doing** project, shaped as it goes.



The Climate Action Group

As part of earlier work, a **Climate Action Group** was formed in Tiree. That group has been quieter recently, and we are now **re-activating it** to support this next phase of work.

The group will:

- Help review evidence from other islands and coastal communities
- Share local and traditional knowledge
- Support decisions about where and how trials should happen
- Help shape monitoring and long-term care of any interventions

You don't need technical expertise to be involved – lived experience matters.

How to get involved

There are different ways to take part with varying levels of commitment:

- Join the Climate Action Group
- Volunteer for practical action days
- Come along to drop-in sessions and workshops
- Or simply stay informed and "in the loop"

To get involved or find out more, contact:

Trish Storie – trish@tireetrust.org.uk

Brodie Sim – brodie@tireetrust.org.uk